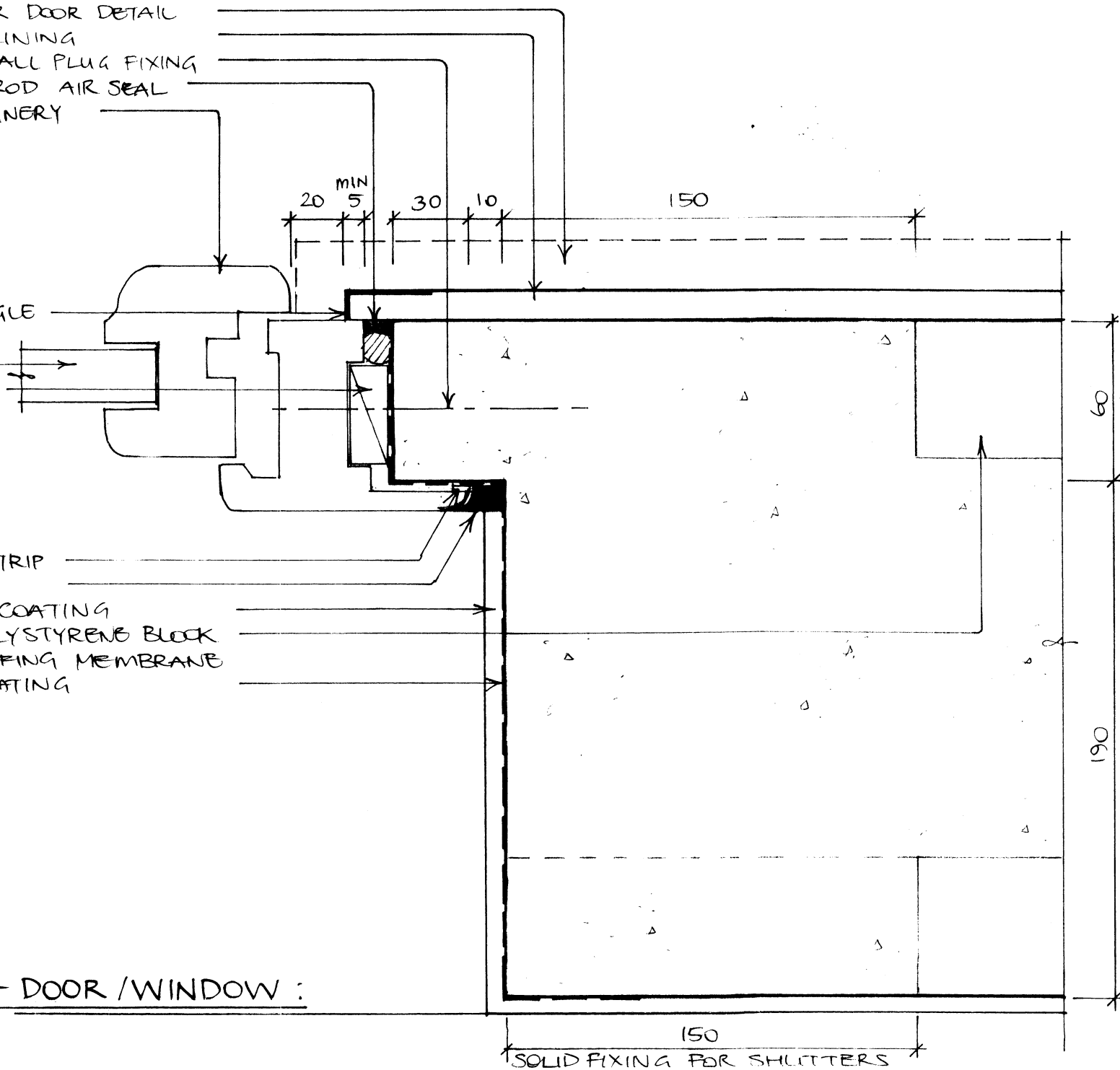


- 135x18 D4S PINE SKIRTING OUTLINE FOR DOOR DETAIL
- 10mm GIBBOARD WALL LINING
- S/S SCREW & NYLON WALL PLUG FIXING
- SEALANT & BACKING ROD AIR SEAL
- DECEUNINCK PVC JOINERY

- P25 GIB STOPPING ANGLE
- DOUBLE GLAZING
- H32 SUPPORT PACKER

- COMPRESSED FOAM STRIP
- SEALANT
- ~6mm STO PLASTER COATING
- 250mm AMBIONSE POLYSTYRENE BLOCK
- APPLIED WATERPROOFING MEMBRANE BEFORE PLASTER COATING

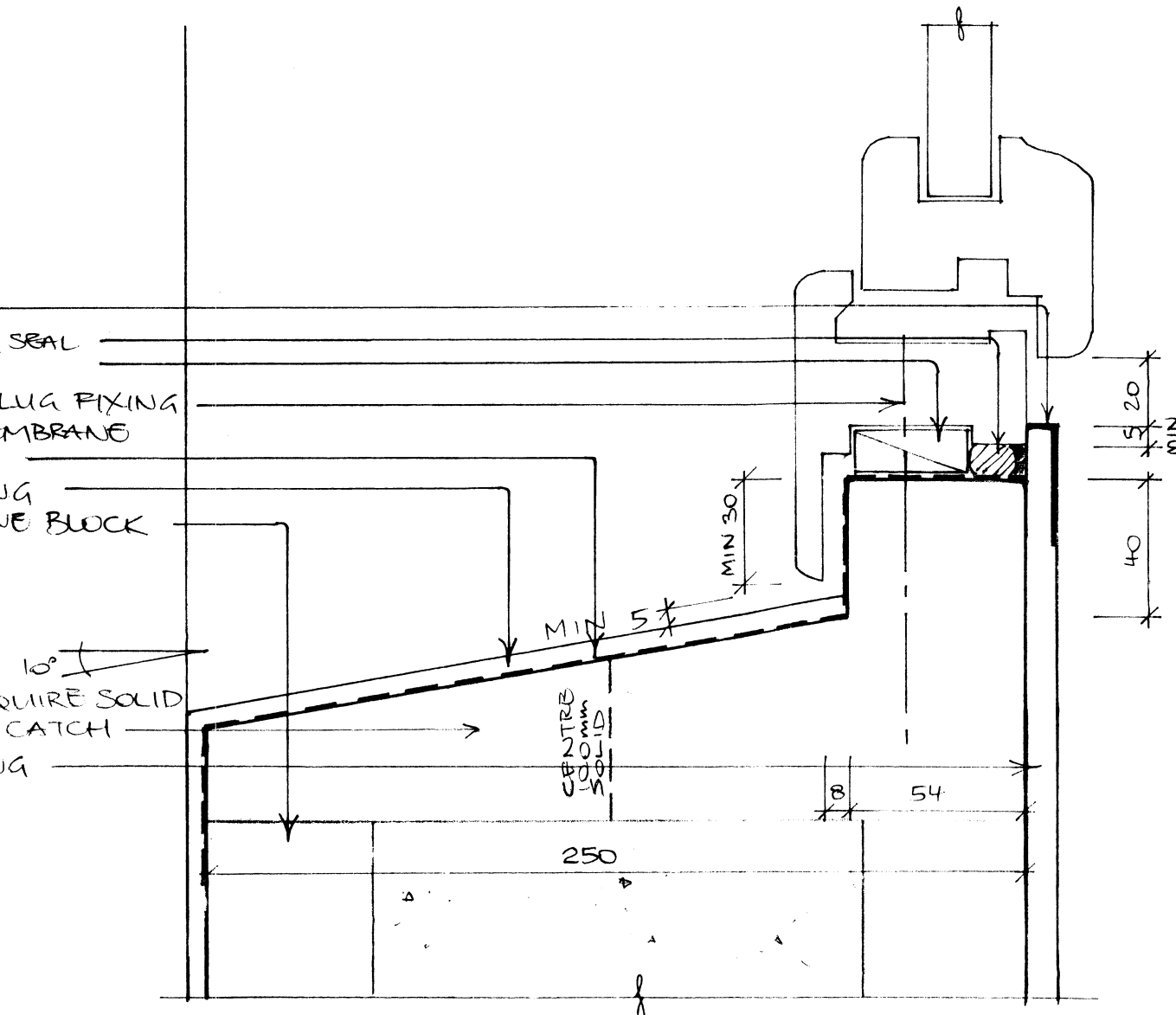
JAMB DETAIL - DOOR / WINDOW :



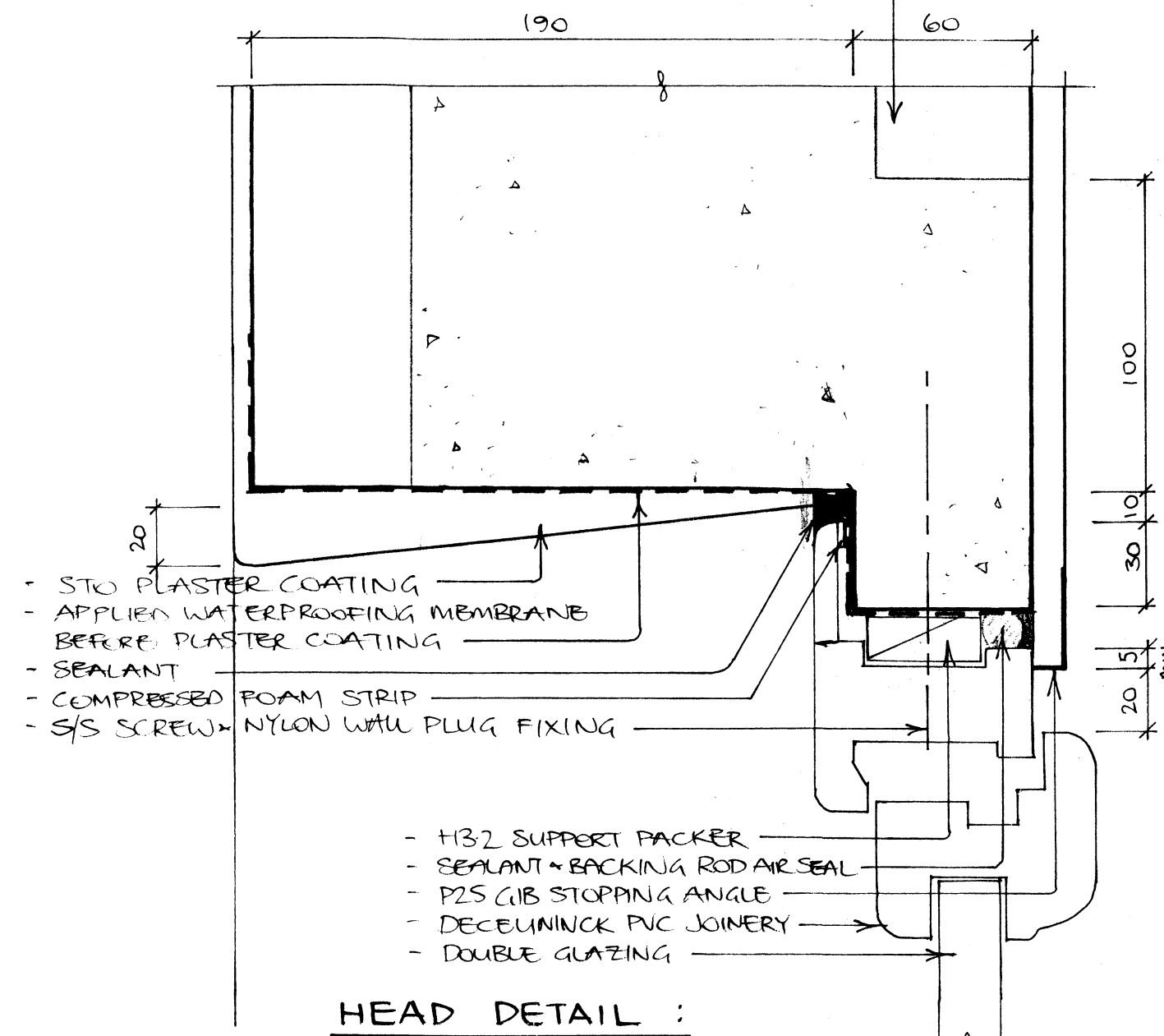
- P25 GIB STOPPING ANGLE
- SEALANT & BACKING ROD AIR SEAL
- H32 SUPPORT PACKER
- S/S SCREW & NYLON WALL PLUG FIXING
- APPLIED WATERPROOFING MEMBRANE BEFORE PLASTER COATING
- ~6mm STO PLASTER COATING
- 250mm AMBIONSE POLYSTYRENE BLOCK

- SHUTTERS TO WINDOWS REQUIRE SOLID 100mm CENTRE OF WINDOW FOR CATCH
- 10mm GIBBOARD WALL LINING

WINDOW SILL :



250mm AMBIONSE POLYSTYRENE BLOCK



HEAD DETAIL :

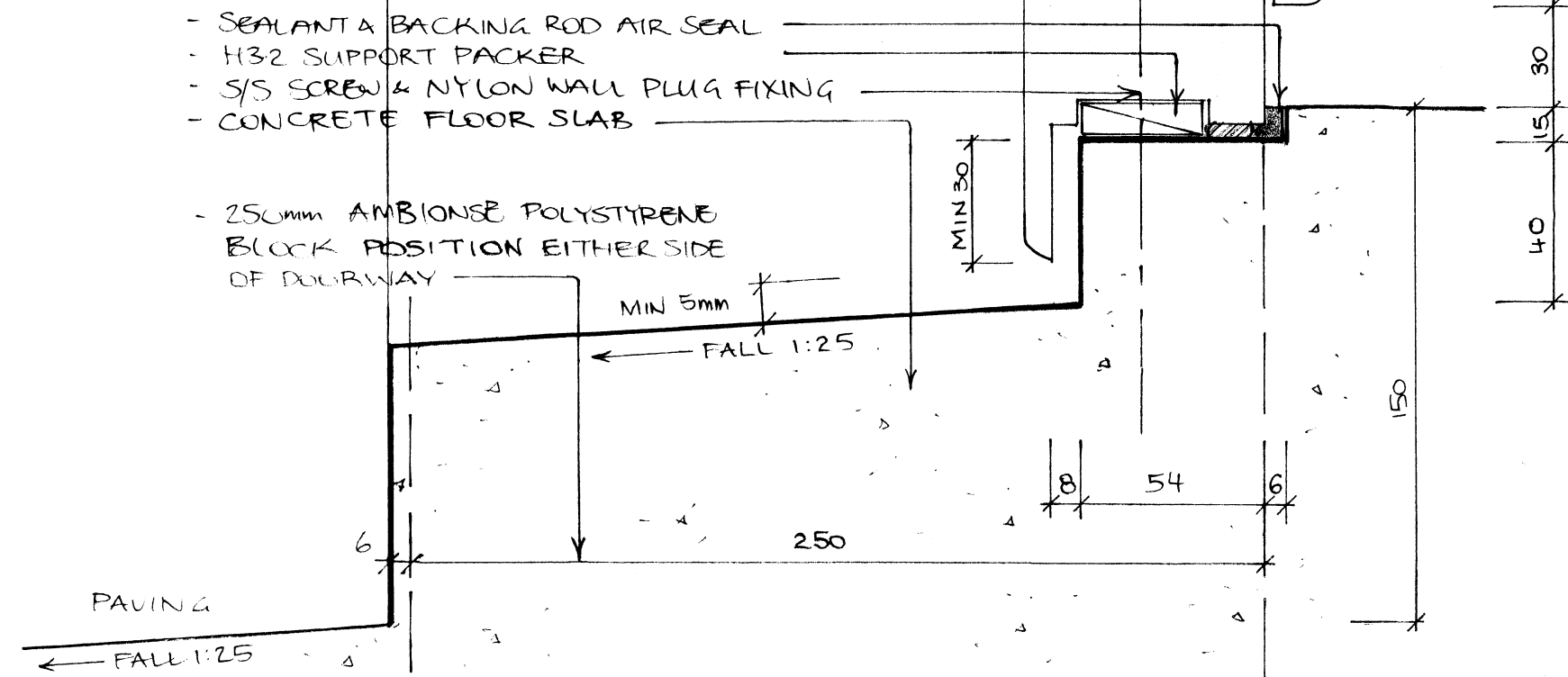
- STO PLASTER COATING
- APPLIED WATERPROOFING MEMBRANE BEFORE PLASTER COATING
- SEALANT
- COMPRESSED FOAM STRIP
- S/S SCREW & NYLON WALL PLUG FIXING

- H32 SUPPORT PACKER
- SEALANT & BACKING ROD AIR SEAL
- P25 GIB STOPPING ANGLE
- DECEUNINCK PVC JOINERY
- DOUBLE GLAZING

- DOUBLE GLAZING
- DECEUNINCK PVC JOINERY

- SEALANT & BACKING ROD AIR SEAL
- H32 SUPPORT PACKER
- S/S SCREW & NYLON WALL PLUG FIXING
- CONCRETE FLOOR SLAB

- 250mm AMBIONSE POLYSTYRENE BLOCK POSITION EITHER SIDE OF DOORWAY



DOOR SILL - PVC

PROJECT
FROW

REVISIONS
no. date. scope.

GENERAL NOTES
all dimensions to be checked on site

drawing title.
JOINERY DETAIL
PVC JOINERY

drawing no./scale.
1:2